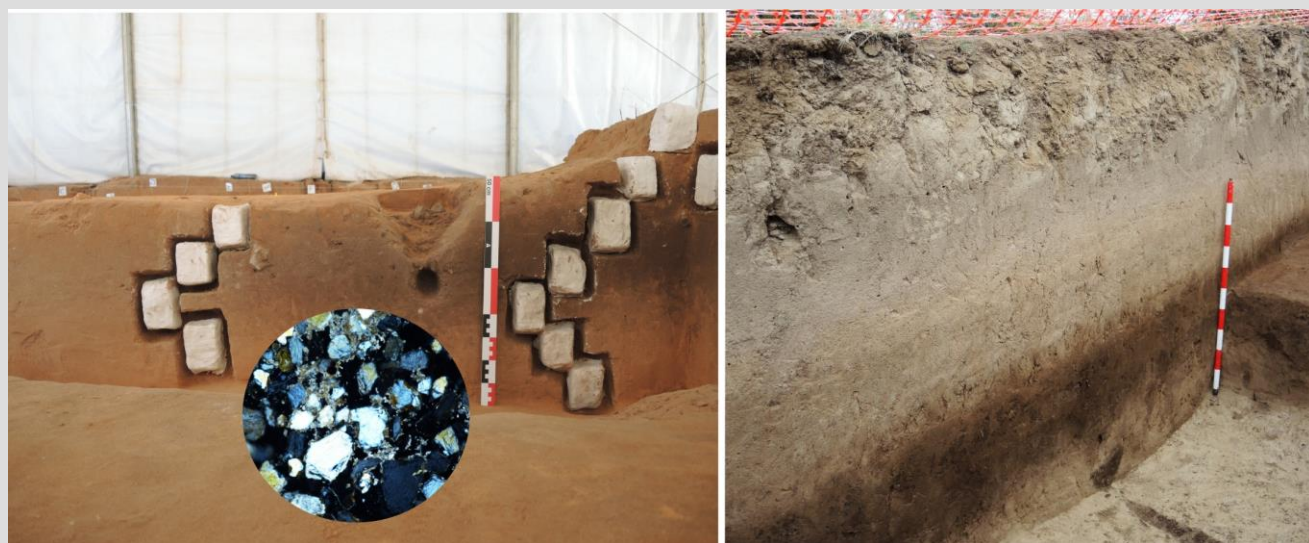


Human-environment interactions of Mesolithic groups in SE Iberia: a geoarchaeological approach

Dr. Ana Polo-Díaz

Department of Geography, Prehistory and Archaeology. University of the Basque Country (UPV-EHU). Ministry of Universities (Government of Spain) and the European Union - Next Generation EU-

María Zambrano Fellow



Mesolithic open air sites are key to understand Early Holocene human-environment interactions in Europe. However, the particularities of the sedimentary contexts where they are located together with preservation issues can pose a challenge for the investigation and interpretation of the archaeological record.

This talk presents the geoarchaeological investigations conducted at two Mesolithic sites (El Arenal de la Virgen and Casa Corona) dated roughly between 9.500 and 8.000 cal BP, and preserved in aeolian deposits in SE Iberia (Spain).

Multi-proxy and multi-scalar analyses were performed on excavated open areas and trenches involving mainly micromorphology, textural analysis and soil chemistry coupled with field observations and the study of reference and experimental materials.

The results obtained enabled us to clarify the formation processes of sediments and soils and discuss the activities and the palaeoenvironmental conditions prevailing during the Mesolithic occupation.

WEDNESDAY, 15th NOVEMBER 2023 – 12h (CET)

<https://conectaha.csic.es/b/xav-yoe-4g8-420>

Organized by: V. Andreaki, F. Borrell, I. Clemente, F. Estebaranz, A. García-Suárez, J.J. Ibáñez, S. Jiménez-Manchón, B. Morell-Rovira, D. Ortega, F. Pichon, M. Portillo, X. Terradas, S. Valenzuela-Lamas & A. Zupancich